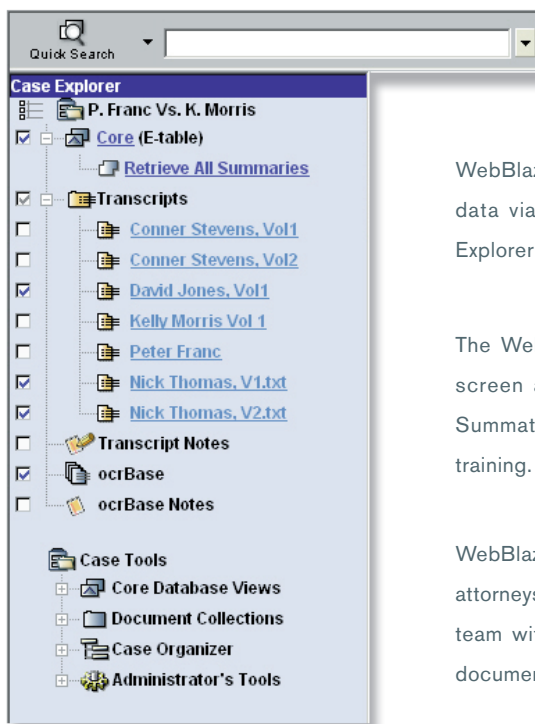




SUMMATION®
LEGAL TECHNOLOGIES, INC.

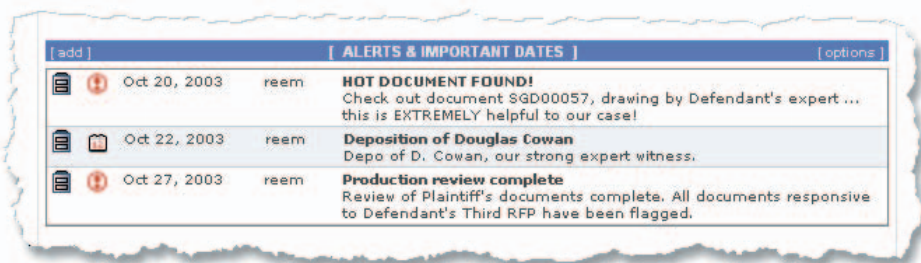
**NOW AVAILABLE: WEBBLAZE - SUMMATION LEGAL TECHNOLOGIES
WEB-BASED LITIGATION SUPPORT SOFTWARE PRODUCT.**



WebBlaze is designed to provide secure, dynamic access to Summation case data via the Internet or an intranet, using only a standard Microsoft Internet Explorer browser.

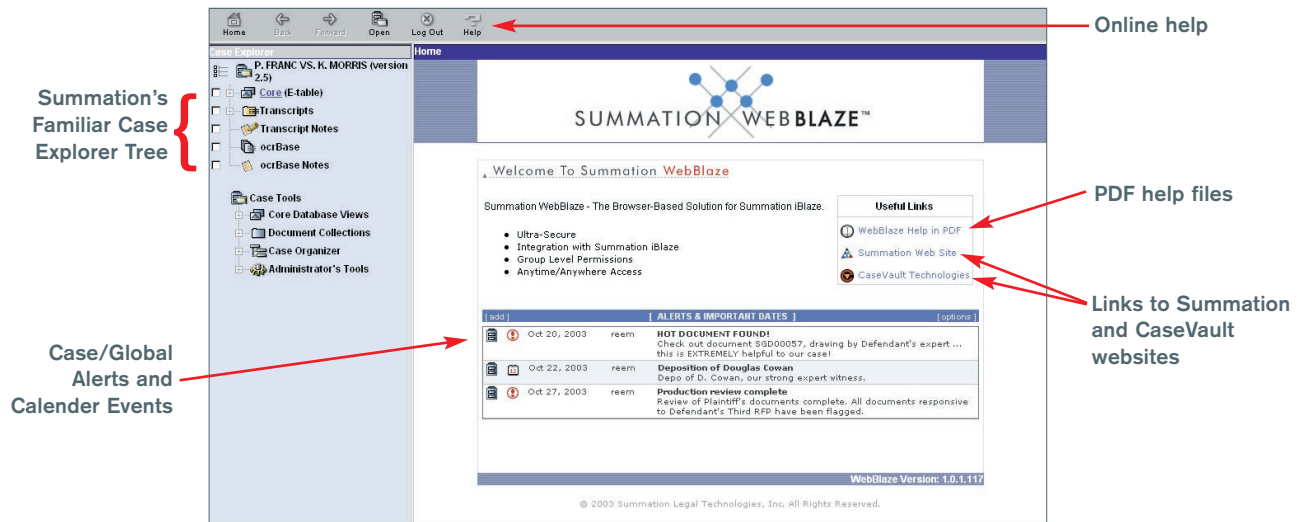
The WebBlaze interface incorporates Summation's hallmark integrated search screen and the familiar Case Explorer tree. Accordingly, users familiar with Summation's LG products can begin using WebBlaze with minimal additional training.

WebBlaze makes it fast and economical to provide expert witnesses, co-counsel, attorneys in other offices, offsite coding operators, and others on the litigation team with easy access to Summation case information – including transcripts, documents, case messages and alerts, and calendar information.



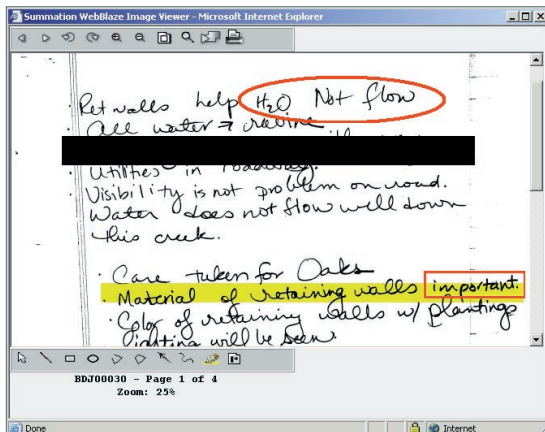
FUNCTIONALITY

WebBlaze enables users to access case data by reaching into the centralized case repository residing in a Summation (LG Gold/iBlaze V2.5) system on the Local Area Network (LAN). Users can access, review, search, and edit case information via the Internet or intranet, without the need to have software installed on their computer or giving access to the corporate LAN. When away from the office without an iBlaze system, avail yourself of WebBlaze with only Internet Explorer and an Internet connection. The road warrior with a Summation iBlaze system on their laptop (and a local copy of their case) can take advantage of iBlaze's unique online/offline solution to access, search, and retrieve case information without being tethered to an Internet connection (e.g. on an airplane, in an unwired courtroom, or at the opposition deposition site where the opposition was not kind enough to provide you with a high-speed Internet connection). Therefore, WebBlaze, iBlaze LAN and iBlaze mobile users can all access the same case information from different settings.



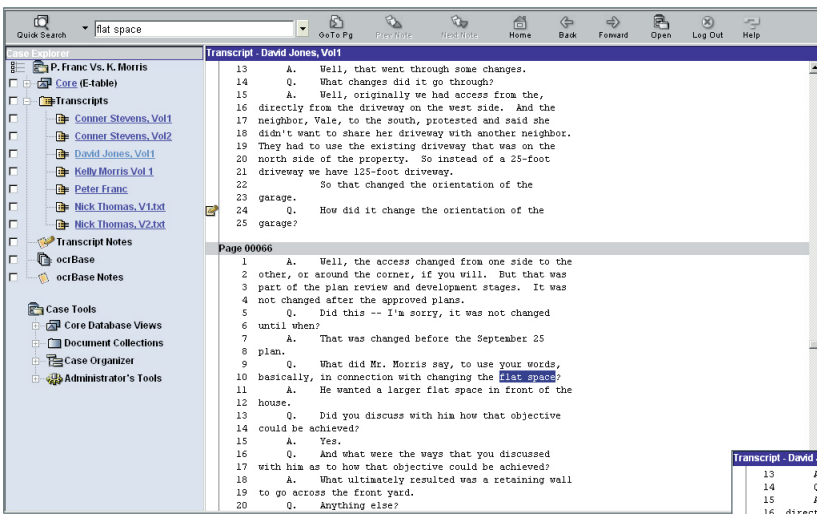
When used in concert with the award-winning Summation LG Gold/iBlaze software, WebBlaze provides users with many of the features that have made Summation Blaze products America's #1 litigation support software. These features include:

- Printing images with or without markups.
- Viewing, marking up, highlighting, and redacting images.

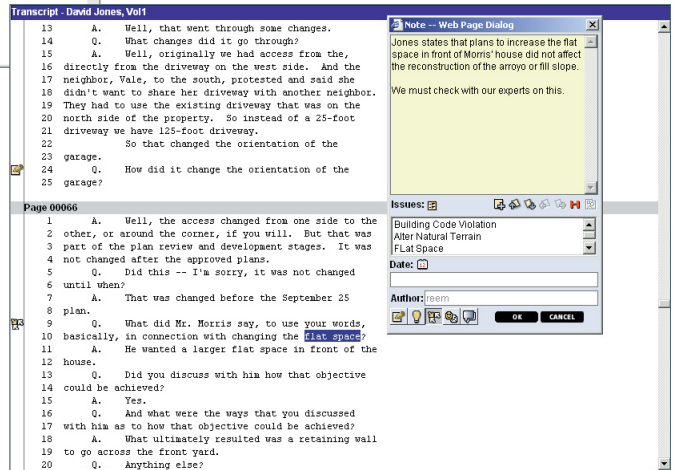
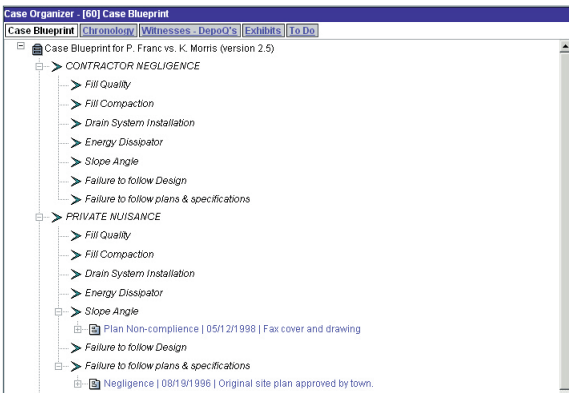


- Viewing, searching, and editing document summaries including the use of data from Lookup tables.
- Users comments can be appended to a field to indicate which notes were made by each user and at what time.
- Viewing and searching fulltext associated with document summaries.
- Viewing and searching companion databases.

Field	DocId	DocType	DocDate	Author	Issues	Attnote
1	KMP00017	Photograph	Sep 09, 1997	Nick Thomas	Pre-flood photo	David LeBeau points at tree that fell causing slope failure. What a joke. I can't connect.
2	KMP00013	Photograph	Apr 00, 1997	Nick Thomas	Pre-flood photo	
3	KMP00037	Photograph	Fuz 00, 1999	Kelly Morris	Flat Space	What he gained. Note how tree well has been minimized.
4	PJF00038	Photograph	Sep 09, 1997	Nick Thomas	Pre-flood photo	
5	PJF00031	Photograph	Feb 03, 1998	Peter Franc	Damages / Flood / Flood Photos	Thomas half-heartedly suggested the grate was clogged by vinca minor (small ivy). Slots in grate so big he could get a backhoe tooth between them. He also had to dig down through mud and silt to get to the grate. No way the vinca had anything to do with this. Remember this mud trapped and almost suffocated a 165# bull mastiff that stands almost 4' tall at the shoulder. Camera date is wrong.
6	PJF00016	Photograph	Feb 03, 1998	Peter Franc	Damages / Flood / Flood Photos	John Ace in photo in yellow slicker.
7	PJF00008	Photograph	Feb 03, 1998	Peter Franc	Negligent Construction / Contractor's Negligence / Damages / Direct Damages / Flood / Flood Photos / Tree Fell Nonsense	Note location of PVC drainpipe oriented with bell down.
8	PJF00006	Photograph	Feb 03, 1998	Peter Franc	Damages / Flood / Flood Photos	Shows driveway and rose garden were obliterated.
9	PJF00019	Photograph	Feb 03, 1998	Peter Franc	Damages / Flood / Flood Photos / Vinca Nonsense	Thomas half-heartedly suggested the grate was clogged by vinca minor (small ivy). Slots in grate so big he could get a backhoe tooth between them. He also had to dig down through mud and silt to get to the grate. No way the vinca had anything to do with this. Remember this mud trapped and almost suffocated a 165# bull mastiff that stands almost 4' tall at the shoulder. Camera date is wrong.
10	KMP00018	Photograph	Apr 00, 1997	Nick Thomas	Pre-flood photo	
11	KMP00028	Photograph	Mar 00, 1997	Nick Thomas	Pre-flood photo	Note level of fill around oak and natural gentle slope - this was made level requiring wall around oak.
12	KMP00029	Photograph	Mar 00, 1997	Nick Thomas	Pre-flood photo	Note level of fill around oak and natural gentle slope - this was made level requiring wall around oak.
13	KMP00035	Photograph	Fuz 00, 1999	Kelly Morris	Flat Space	What he gained.
14	PJF00047	Photograph	Sep 00, 1997	Nick Thomas	Willful Creation of Nuisance / Fraud / After Natural Terrain / Building Code Violation / Flat Space / Flat Space	

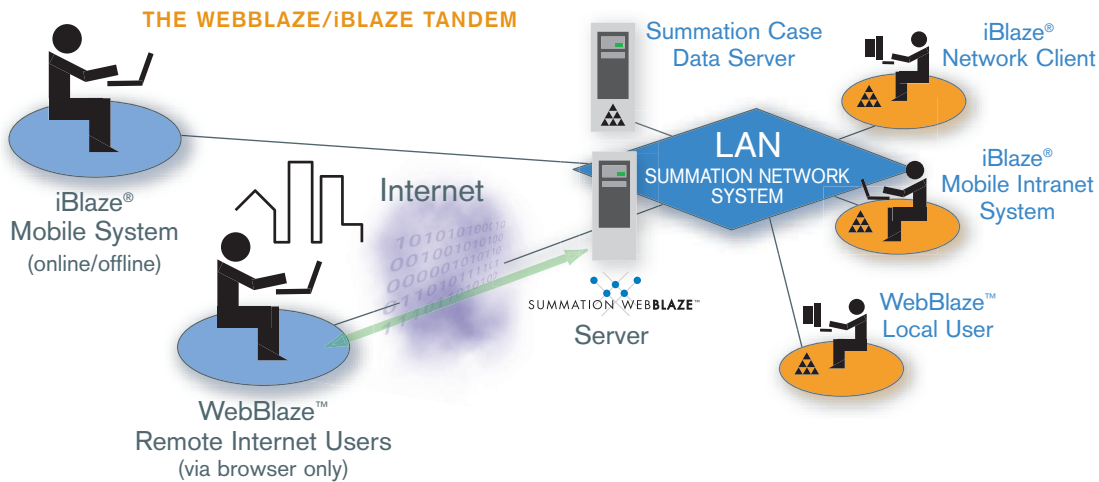


- Viewing, searching, and annotating transcripts for which permissions are granted.
- Viewing, adding, editing, and searching transcript notes, if permissions are granted.
- Accessing and adding to Summation's Brainstorming tool, the Case Organizer.



INTEGRATED ARCHITECTURE

WebBlaze is based on Summation core functionality, presented in a simple and clean interface. Users who want only Summation core functionality or need only occasional access to the information (e.g. expert witness, corporate counsel, or client) can use WebBlaze, while the rest of the team can use the powerful Summation toolset, available in LG Gold/iBlaze. The integration between WebBlaze and the LAN Summation Administrator Console (AdminConsole) greatly facilitates assigning and controlling WebBlaze user/group permissions. Through the AdminConsole, the Summation Administrator can easily grant/deny specific functionality, access to cases, and access to selected case information.



COMPANION/REMOTE REPOSITORIES

In addition to connecting to Summation databases, WebBlaze enables users to access a variety of companion repositories:

- Summation Briefcases (after conversion to a Companion database in the Summation LAN system)
- Summation databases
- CaseVault databases
- MS Access databases
- MS SQL databases

SECURITY

As many administrators already know, security is a function of multiple layers of protection. Summation WebBlaze includes many features to assist in securely providing your sensitive case data to only authorized users.

- **Documentation** - All documentation and wizards refer to the most secure methods of offering WebBlaze server services, including various network configuration options to integrate into virtually any network environment.
- **Data Encryption** - Summation provides an SSL certificate good for one year with the purchase of Summation WebBlaze server. Using HTTPS with this certificate will secure communications between the client and WebBlaze server.
- **User Authentication** - Summation WebBlaze user authentication is fully integrated with Summation standard or NT security. This close integration allows the Summation Administrator to control both iBlaze and WebBlaze user permissions from a single interface. This integrated arrangement provides secure, controlled remote access permissions to users without requiring WebBlaze users to have an NT/Active Directory user account (good for outside experts and others that require temporary or occasional access).
- **Standard IIS Security Tools** - Microsoft IIS lockdown tool along with suggested settings help create the most secure IIS configuration possible, while maintaining a high level of user functionality.
- **Integration with Existing Network Security Infrastructure** - WebBlaze utilizes the Microsoft IIS server and standard open Internet protocols allowing your IT professionals to integrate the Summation WebBlaze server within the existing firewall/network environment that they previously established. This allows you to fully benefit from the first line of network defense, the network firewall.
- **Secure Default Settings** - All permissions are set by default to "no access" reducing the chance of inadvertent data exposure by forcing the administrator to EXPLICITLY allow remote access.

PRICING

ITEM	SOFTWARE	ANNUAL MAINTENANCE
WebBlaze Server*	\$4,995.00	\$750.00
Additional 5 Seat Bundles*	\$2,495.00	\$375.00

* WebBlaze Server purchase includes five (5) seats.

* Additional bundles are available in five (5) seat increments only.

- Single-user iBlaze systems are available for \$995 for clients who do not own Summation LG Gold/iBlaze software.
- Pricing is for purchase of WebBlaze licenses for internal law firm use.

SYSTEM REQUIREMENTS

- LG Gold concurrent-user network customers must have a minimum of one (1) iBlaze system (available at a discounted price of \$995 with purchase of WebBlaze) in order to create Briefcased subsets of data within WebBlaze.
- For more information, contact our Sales Department at sales@summation.com or 800-735-7866.

